



780 N. Commercial Street  
P. O. Box 330  
Manchester, NH 03105-0330

**Christopher J. Allwarden**  
Senior Counsel

603-634-2459  
christopher.allwarden@eversource.com

November 2, 2018

Debra A. Howland, Executive Director & Secretary  
New Hampshire Public Utilities Commission  
21 South Fruit Street, Suite 10  
Concord, NH 03301



Re: Public Service Company of New Hampshire d/b/a Eversource Energy - NHDOT  
Ossipee Bridges Project, Ossipee, NH

Dear Ms. Howland:

This is notification that Public Service Company of New Hampshire d/b/a Eversource Energy ("Eversource") is proceeding with the relocation of existing overhead wire crossings of the Lovell River and the Bearcamp River, in Ossipee, New Hampshire, at the location of the NH Routes 16/25 bridges over the Lovell River and the Bearcamp River. These relocations have been requested by the State of New Hampshire Department of Transportation ("NHDOT"), to accommodate a NHDOT project (OSSIEE 14749 X-A000(490)) to replace these bridges. A copy of NHDOT's letter request for relocation, dated December 4, 2017, and NHDOT's letter confirming acceptance of the relocation designs, dated May 23, 2018, both addressed to Eversource, and the roadway plans for each bridge relocation project, are enclosed for your information. Please note that, in accordance with NHRSA 371:18, a petition and hearing for a crossing license are not required where, as here, the crossing is for the exclusive purpose of relocation of public utility facilities at the request of the state.

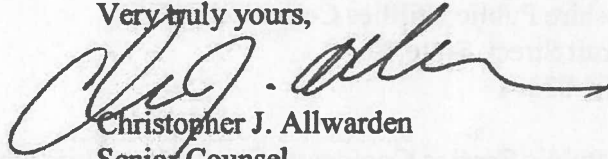
The existing overhead wire crossing of the Lovell River is part of the Eversource 3116X circuit, a 12.47 kV three-phase distribution line, which currently crosses the River starting on the east side of the bridge (traveling northerly on NH Routes 16/25) and then diagonally crosses to the west side of the bridge. The new overhead crossing of the Lovell River will be constructed entirely on the east side of the bridge (traveling northerly on NH Routes 16/25), offset a distance of approximately 43 feet from the center line of the roadway.

The existing overhead wire crossing of the Bearcamp River is also part of the Eversource 3116X 12.47 kV three-phase distribution line circuit, which crosses the River on the east side of the bridge (traveling northerly on NH Routes 16/25). There will be a new temporary overhead crossing, and then a new permanent overhead crossing, constructed in connection with this bridge project. The new temporary crossing of the Bearcamp River will be located on the east side of the River, offset a distance of approximately 110 feet from the center line of the roadway. The new permanent crossing of the Bearcamp River will also be located entirely on the east side of the River, offset a distance of approximately 37 feet from the center line of the roadway.

All of the new overhead crossings of the Lovell and Bearcamp Rivers have been designed, and will be constructed and maintained, by Eversource in accordance with all the requirements of the National Electrical Safety Code, as required by NHRSA 371:18.

Should there be any questions concerning these projects, please contact me.

Very truly yours,



Christopher J. Allwarden  
Senior Counsel

Encs.

cc: S. D. Bosse, Eversource  
J. D. Letourneau, Eversource  
A. M. Desbiens, Eversource  
Thomas C. Frantz, Electric Division Director  
Randy S. Knepper, P.E., Safety Division Director  
OCA



**Victoria F. Sheehan**  
Commissioner

**THE STATE OF NEW HAMPSHIRE**  
DEPARTMENT OF TRANSPORTATION



**William Cass, P.E.**  
Assistant Commissioner

OSSIPEE  
14749  
X-A000(490)  
(NH 16/NH 25; Replace 3 Bridges, 137/299, 137/297, 152/268 &  
Resurfacing Approx. 3.2 Miles)  
[POLE RELOCATION REQUEST – MAINTAINER]

Bureau of Highway Design  
Room 200  
Tel. (603) 271-2171  
Fax (603) 271-7025

December 4, 2017

Erin L. Normand  
Supervisor - CSSC  
Eversource Energy  
780 North Commercial Street  
PO Box 330  
Manchester, NH 03105-0330

Dear Ms. Normand:

The State requests the assistance of your Company, jointly with the co-owner FairPoint Communications, in the engineering of the proposed pole relocation design on the above noted State project. This project consists of the replacement of the bridge over the Lovell River (152/268) and the two bridges over the Bearcamp River (137/299, 137/297) and pavement resurfacing beginning at NH 1B and heading north approximately 3.2 miles on NH 16/NH 25 in Ossipee, New Hampshire.

Enclosed are two sets of 1"=50' preliminary plans, one set of cross-sections, and two sets of Pole Relocation Summary Sheets indicating conflicts with the proposed construction. Please indicate (mark in color) your proposed pole relocations, including guys and push braces, on both sets of plans and document those locations by station and offset on both sets of summary sheets. Return one set of plans and one set of signed summary sheets to this office. The second set of plans and summary sheets and set of cross-sections are for your records.

Please coordinate with all other utilities that occupy the poles in question on the proposed relocations. The State requires that the poles be relocated to maintain proper offset distances for the applicable design speeds.

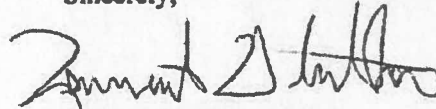
The posted speed for NH 16/NH 25 is 45 mph, which requires an offset of twenty feet from the outside of the traveled way. In the event of insufficient right-of-way, poles shall be set the maximum of two feet or one-half of the cross arm width from the right-of-way line but in no instance less than eight feet from the edge of pavement. Behind urban vertical curb, poles must be placed in back of the sidewalk if the sidewalk abuts the curb, but may be placed two feet from the curb face if a grass panel

abuts the curb and sidewalk. In no instance shall the poles be set less than one and one-half foot from the curb face.

The removal and disposal of any abandoned facility in conflict with the project shall be the responsibility of the owner of the facility.

This project is currently scheduled to advertise for bids on July 10, 2018; therefore, the return of the plans and pole summary sheets are requested by February 2, 2018, so our design process can continue on schedule. **If you have any questions, please contact Matthew Powers of this office at 271-2267.**

Sincerely,



Lennart D. Suther, P.E.  
Utilities Engineer

LDS/mcp

Enclosures

cc: V. Chase, Construction, Final Design

S:\Highway-Design\TOWNS\Ossipee\14749\Utilities\Relocations\14749EEPoleReloLtr12.1.17.docx



Victoria F. Sheehan  
Commissioner

THE STATE OF NEW HAMPSHIRE  
DEPARTMENT OF TRANSPORTATION



William Cass, P.E.  
Assistant Commissioner

OSSIPEE  
14749  
X-A000(490)  
(NH 16/NH 25; Replace 3 Red Listed Bridges &  
Resurface Approximately 3.2 Miles)  
[POLE RELOCATION APPROVAL - MAINTAINER]

Bureau of Highway Design  
Room 200  
Tel. (603) 271-2171  
Fax (603) 271-7025

May 23, 2018

Erin Normand  
Supervisor - CSSC  
Eversource Energy  
780 North Commercial Street  
PO Box 330  
Manchester, NH 03105-0330

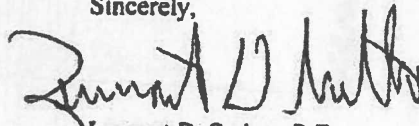
Dear Ms. Normand:

We have received your proposed pole relocations joint with Consolidated Communications Inc. for the above noted State project. The locations have been reviewed by this office and appear to be acceptable. Enclosed are one (1) set of Plans and Pole Relocation Summary Sheets listing the approved locations.

Please review the work you are required to perform including tree clearing/trimming, the placing of poles, guys and push braces and transfer of wires and provide this office with separate estimated time frames (in weeks) required to complete your relocations and transfers. Also, provide the estimated notification time frame needed to begin your work.

This project is currently scheduled to advertise for bids on July 10, 2018; therefore, a letter of reply is requested by June 1, 2018, so our design process can continue on schedule. If you have any questions, please contact Matthew Powers of this office at 271-2267.

Sincerely,

  
Lennart D. Suther, P.E.  
Utilities Engineer

LDS/mcp

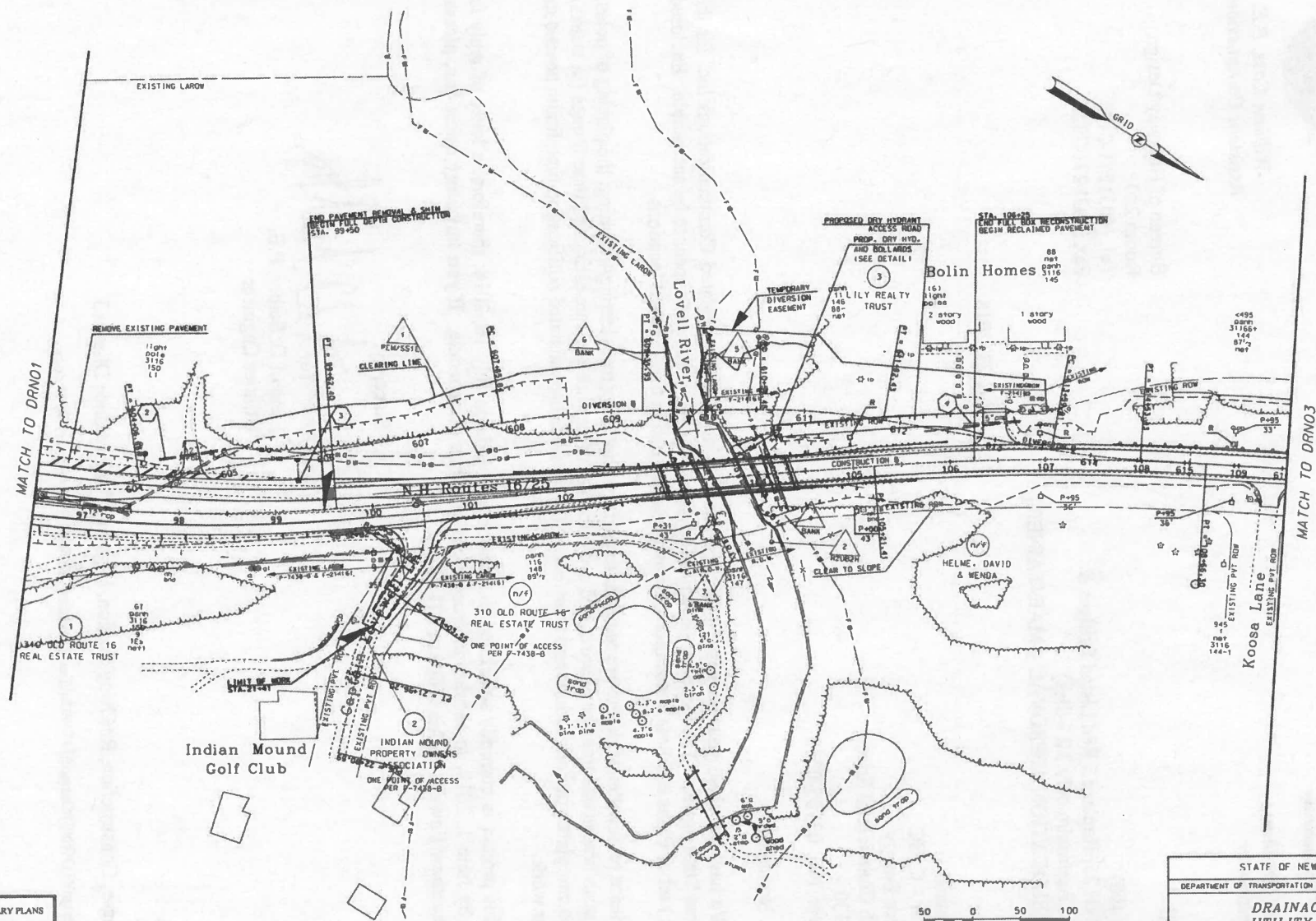
Enclosures

cc: V. Chase, Construction, Roadway Section, Highway Maintenance District 3

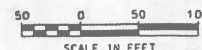
S:\Highway-Design\TOWNS\Ossipee\14749\Utilities\Relocations\14749EEPoleApprLtr5.16.18.docx



SR PROCESSED				REVISIONS AFTER PROPOSAL			
NAME1	DATE1	NAME2	DATE2	NUMBER	DATE	STATION	DESCRIPTION
NEW DESIGN							
SHEET CHECKED	DATE3						
AS BUILT DETAILS							
	DATE						

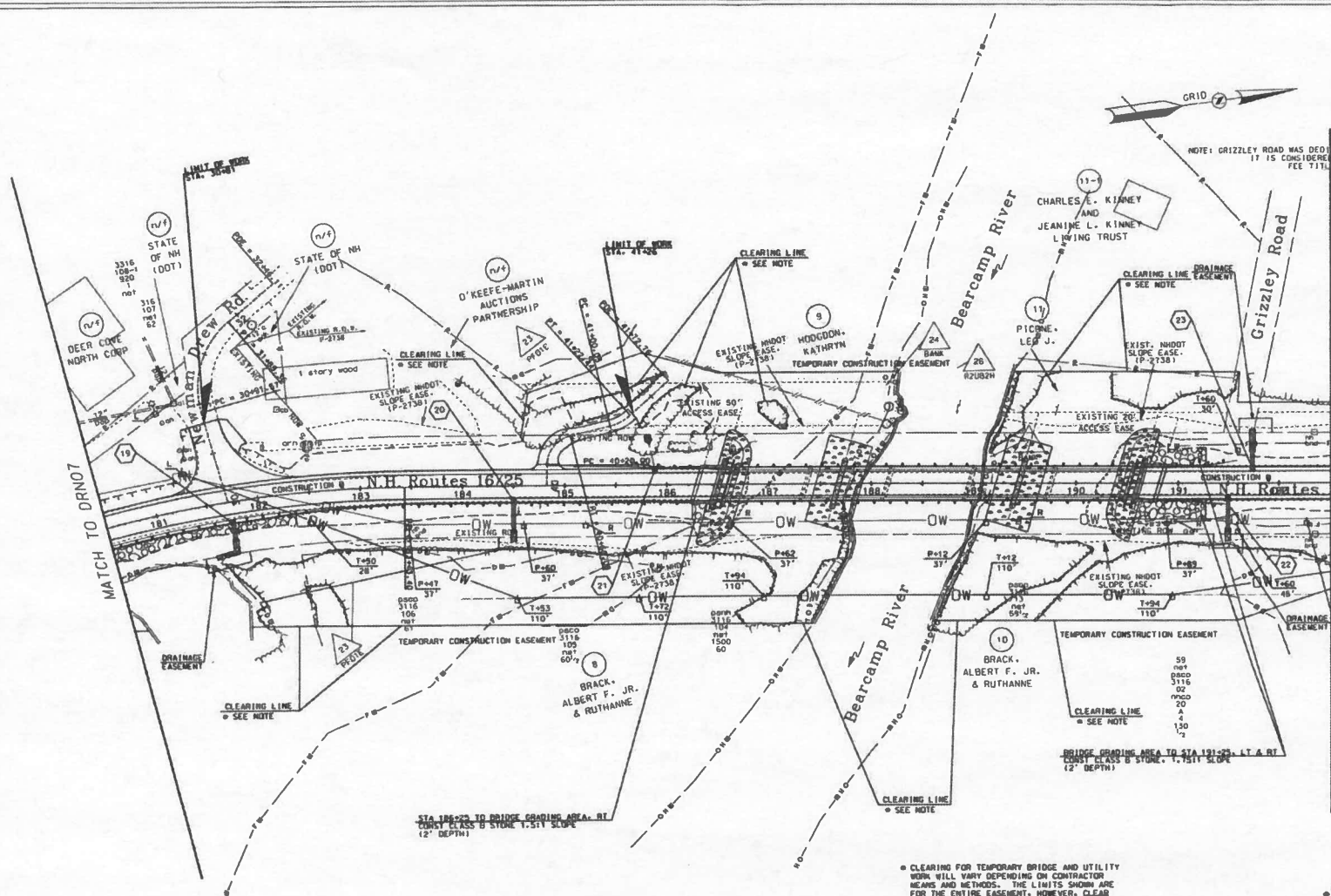


PRELIMINARY PLANS  
SUBJECT TO CHANGE  
DATE 3/15/2018



STATE OF NEW HAMPSHIRE			
DEPARTMENT OF TRANSPORTATION • BUREAU OF HIGHWAY DESIGN			
<i>DRAINAGE AND UTILITY PLANS</i>			
DGN	STATE PROJECT NO.	SHEET NO.	TOTAL SHEETS
14749DRN	14749	1	1

REVISIONS AFTER PROPOSAL				DESCRIPTION
NUMBER	DATE	STATION	STATION	
	DATE 1			
	DATE 2			
	DATE 3			
	DATE			



• CLEARING FOR TEMPORARY BRIDGE AND UTILITY WORK WILL VARY DEPENDING ON CONTRACTOR MEANS AND METHODS. THE LIMITS SHOWN ARE FOR THE ENTIRE EASEMENT. HOWEVER, CLEAR ONLY WHAT IS NECESSARY FOR THE WORK.



STATE OF NEW HAMPSHIRE			
DEPARTMENT OF TRANSPORTATION • BUREAU OF HIGHWAY DESIGN			
<i>DRAINAGE AND UTILITY PLANS</i>			
ODN	STATE PROJECT NO.	SHEET NO.	TOTAL SHEETS
147490RN	14749	B	17